



MAKING SURE
YOUR BIOSAFETY LAB
MEETS USER NEEDS

PASSIONATE ABOUT FUNCTIONALITY

Biocontainment facilities are almost always complicated to commission. Why? Because every single one of them is different. There's no cookie cutter approach that can be used, which means these types of facilities often pose challenges to owners and contracting teams, alike.

Cornerstone's portfolio includes over 300 BSL-3 or BSL-4 labs, and our team has addressed a variety of layouts, features, operating procedures, and end uses. We excel at making suggestions that can save you time, money and space.

Whether your biocontainment laboratory is located rurally in Iowa, or on the 10th floor of a high-rise building in New York City our experience means we've practically seen and done it all, and know how to deliver biocontainment labs that work.

**WHEN YOU HIRE
CORNERSTONE,
IT'S SIMPLE:
YOU END UP
WITH A BETTER
FACILITY**

**MORE
FUNCTIONAL
FOR THOSE
WHO WILL
USE IT**

**MORE COST
EFFICIENT**

INTEGRITY

Not all biocontainment facilities perform the way they were designed to. Having Cornerstone on your project will help achieve lab performance integrity and make sure the owner's vision for the facility is met.

DURING DESIGN

Cornerstone works with your design team to correct problems while they're still on paper.

- What temperature, humidity and pressure do each of the rooms need to be?
- How many air changes per hour?
- What will building turnover look like?
- Will this biocontainment facility actually perform the way the owner envisioned?

DURING CONSTRUCTION

We'll make sure you get what you paid for.

- Our hands-on process verifies that the specified systems are properly installed and functioning optimally.
- Rather than waiting, our team tests systems as soon as they're ready, helping uphold the overall project schedule.



DURING ACCEPTANCE & AFTER

We'll challenge systems with real and simulated scenarios to discover and solve problems before the owner takes possession.

- Our team knows exactly how your lab is supposed to respond during system failures.
- Our process will help ensure your lab stays safe, and we can train your staff to do so, as well.

Increased ROI – During design we'll spot issues and cost saving opportunities well before construction. After acceptance, we can reverify systems annually and address any new concerns.

INSPIRING APPRECIATION



“Cornerstone Commissioning worked with the project team from design through turnover to ensure A/BSL-3 administrative and engineering controls were in place. We invite them back every year to perform our Annual Performance Verification because they understand our building, resolve issues and educate our staff. Facility compliance inspectors are impressed by the outstanding facility performance verification documents.”

MELISSA A. JAMES, MPS, RBP
FACILITY MANAGER / RESPONSIBLE OFFICIAL
PENN STATE UNIVERSITY – PELL LAB FOR ADVANCED BIOLOGICAL RESEARCH

“When Cornerstone identifies a problem during testing, you often provide a way to fix it. That is atypical among commissioning firms.”

SOURCE: SCHNEIDER / CONTROLS MANAGER

“Cornerstone Commissioning brought expertise to the team and provided valuable input throughout the construction and commissioning effort. Dan was proficient to set up, monitor systems and work with our technicians to deliver an efficient and conclusive commissioning process.”

ERNESTO BETANCOURT
SENIOR PROJECT MANAGER, THOMAS JEFFERSON UNIVERSITY

HANDS-ON



Dan Frasier, PE, CCP
Principal and CEO



Dan Cook, LEED AP
Director of Critical Projects



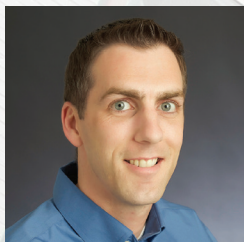
J. Paul Jennette, MS, PE,
RBP, CBSP
Biosafety Consultant



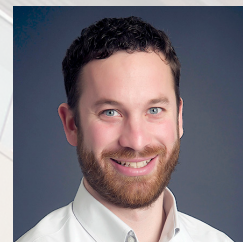
Aurel Tamburri, MHM, MLS,
CRSP, D.OHS
Laboratory Operations Consultant



Alex Taylor
Biosafety Commissioning Engineer



Brian Billman, PE, LEED AP,
CCP
Mid-Atlantic Director of Commissioning Services



Tim Shukri, PE, MSME
New England Director of Commissioning Services



Ryan Zei
Senior Commissioning Engineer



Jay Moore, EIT, BCxP, CEM
Senior Commissioning Engineer



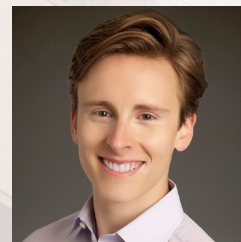
Will Mullin, BSME
Commissioning Engineer



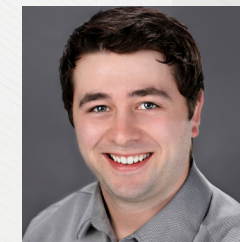
Andrew Burch, EIT
Commissioning Engineer



Zachary Weidenhof
Commissioning Engineer



Dawson Frasier
Commissioning Specialist



Jacob Weaver
Commissioning Specialist



Noah Green
Commissioning Specialist

OUR TEAM GOES TO LENGTHS OTHERS DON'T TO KNOW **CONCLUSIVELY** WHETHER YOUR BIOCONTAINMENT FACILITY AND ITS SYSTEMS WILL WORK AS INTENDED.

CLIENTS' FIRST CHOICE



Univ. of CA Davis, New Virology & Immunology Lab



Univ. of Louisville, Center for Predictive Medicine, Lab Expansion



North Dakota State Univ., Ag. Service Ctr. Greenhouse Complex, BLP-3 Bldg.



Tufts New England Reg. Biosafety, New Lab Bldg. & APVs



Iowa State Univ., ABSL-3 and BSL-3 Modular Labs



Univ. of CA Davis, J1 ABSL-3 Vivarium



Tufts, Arnold BSL-3 Lab



Penn State, New Pell ABSL-3 Lab for Advanced Biological Research



Vaccine Gene Therapy Institute, BSL-3 Labs



UMass Amherst Morrill 1, BSL-3 Lab



USDA, Ames Facility Modernization



NIH, NIAID Bldg. 33, New Biomedical Research Facility

COLLABORATING WITH YOU

EXISTING BSL-3 FACILITY

Is your facility experiencing any of these issues?

- Unable to pass failure testing scenarios
- Insufficient ventilation
- Temperature and humidity fluctuations
- Room airflow direction problems
- Ineffective building control system sequences
- Flawed functionality that affects workflow
- Challenging gaseous decontamination requirements in rooms

If so, call us and we'll do a quick assessment to figure out how to get your lab working the way it needs to for the users who rely on it. We can also help you ensure it passes annual performance verification.

REACH OUT TO:

Roger Griffith
469-674-9217
rgriffith@mts-hvac.com

www.mts-hvac.com

NEW BSL-3 FACILITY

Or, if you have a new BSL-3 facility that's being built, we can help you

- MEP and Biosafety system selection
- Building control system sequences
- Unique design options that improve usability and save money, space and energy
- Meeting USDA, CDC, NIH, AALAC and other BSL-3 facility performance requirements
- Observing and documenting the performance of all systems after installation

We'll collaborate with you to help deliver a fully functional, biocontainment facility that surpasses expectations.



GET IN TOUCH

Roger Griffith
469-674-9217
rgriffith@mts-hvac.com

www.mts-hvac.com



TSS FAMILY OF COMPANIES